



Diesel/LPG Forklift Trucks 2500,3000kg H25D/T, H30D/T

351-04

Linde Material Handling

Linde

Productivity

Effective and cost-efficient at work: The original Linde hydrostatic drive cost does away with gearshift, clutch, differential and drum brakes. As a result, servicing costs are low, truck uptime is high and productivity is enhanced.

Performance

Advanced engine combined with the original hydrostatic transmission system enables the operator to use the truck's vast potential to maximise productivity. All mast functions are conveniently operated with the central control lever.

Reliability

Proven in tough sustained operation. Multifunction hydraulic control lever for lift, lower and mast tilt, automatic engine speedup governed according to hydraulic power demand.

Safety

Outstanding ergonomic qualities for minimum of drive fatigue. Routine deceleration and service braking by the automatic transmission, parking brake automatically engaged when the engine is switched off. Low noise levels ensures the instructions and acoustic signals are easily discernible.

Comfort

The high level of operator comfort allows a high level of precision and working performance. The ease of handling afforded by the Linde twin drive pedals provide the basis for fast, stress-free working.

Features

Linde protector frame

- Safe and robust chassis, enclosed on all sides
- The operators module with integrated overhead guard is isolated from the chassis by Linde developed shock absorber suspension for minimum transmission of VHN (vibration, harshness and noise)

Standard Equipment

- Adjustable comfortable seat with damping
- Linde twin-pedal drive and multi-function hydraulic single control lever to govern lifting, lowering and mast tilting without operators having to move from one control to another
- Combination dry-type intake air filter
- Suction-type hydraulic filter
- Power steering
- Combi-instrument on dashboard incorporating operating hour meter and control lights for all important truck functions
- Pneumatic tyres
- Standard lift mast: Lift height $h_3=3050\text{mm}$
- Fork arms $l=1000\text{mm}$
- Standard fork carriage

Optional Equipment

- Standard masts, lift height 3050 to 5550mm; Duplex masts (full free lift), lift height 2750mm; Triplex mast (full free lift), lift height 4025 to 6275mm
- Luxury driver seat with hydraulic damping
- Integrated sideshift; load backrest; one or two additional hydraulic circuits available for all mast type, control incorporates automatic engine speed up
- Various nonstandard fork lengths
- Additional equipment for operator's overhead guard up to fully glazed cab with enclosed roof, windscreen, side and rear panels
- Cab heating system; working lamp
- Two-wheel at front; Pneumatic tyres; Non marking tyres
- Special paint
- Container version (height of overead guard 2070 or 2150mm)
- Particulate filter (Diesel engines)
- Double gas bottle bracket for LPG truck

Other Options Available on Request

Technical Data

May. 2007		Manufacturer's Data and Design Characteristics		
Characteristics	1.1	Manufacturer		Linde
	1.2	Model designation		H25D-04
	1.3	Power unit: Battery, diesel, gasoline, LP gas, AC		Diesel
	1.4	Operation		Seated
	1.5	Load capacity	Q(t)	2.5
	1.6	Load center	c(mm)	500
	1.8	Axle centre to fork face	x(mm)	512.5
	1.9	Wheelbase	y(mm)	1715
Weights	2.1	Service weight	kg	4336
	2.2	Axle load with load, front/rear	kg	6160/676
	2.3	Axle load without load, front/rear	kg	2120/2216
Tyres	3.1	Tyre: SE=(super elastic), P=(pneumatic)		P
	3.2	Tyre size, front	inch	7.00-12/16PR ¹⁾
	3.3	Tyre size, rear	inch	6.50-10/10PR ²⁾
	3.5	Wheels, number front/rear(X=drive)		2(4)X/2
	3.6	Track width, front/rear	b10/b11mm	990(1220) ³⁾⁴⁾ /942
	Dimensions	4.1	Mast tilt, forward/backward	$\alpha / \beta(^{\circ})$
4.2		Height of mast, lowered	h1(mm)	2405(2110/2110) ⁶⁾
4.3		Free lift	h2(mm)	150
4.4		Lift	h3(mm)	3050(2750/4025) ⁸⁾
4.5		Height of mast, extended	h4(mm)	3855(3535/4810) ⁸⁾
4.7		Height of overhead guard (cabin)	h6(mm)	2250(2070 or 2550)
4.8		Height of drive seat	h7(mm)	1135(1064 or 1435)
4.20		Length to fork face	l2(mm)	2650
4.21		Overall width	b1/b2(mm)	1164 ¹⁰⁾
4.22		Fork dimensions, sxexl	s/e/l(mm)	45X100X1000
4.23		Fork carriage to DIN 15173		2A
4.24		Width of fork carriage	b3(mm)	1150 ¹⁰⁾
4.31		Ground clearance with load, mast	m1(mm)	130
4.32		Ground clearance with load, center of wheelbase	m2(mm)	160
4.33		Aisle width, 1000x1200mm across forks	Ast(mm)	4003
4.34		Aisle width, 800x1200mm along forks	Ast(mm)	4203
4.35		Turning radius	Wa(mm)	2290
4.36		Minimum pivoting point distance	b13(mm)	580
Performance	5.1	Travel speed, with/ without load	km/h	22/23
	5.2	Lifting speed, with/without load	m/s	0.52/0.56
	5.3	Lowering speed, with/without load	m/s	0.52/0.45
	5.5	Tractive force, with/without load	N	18000/14000
	5.7	Climbing ability, with/without load	%	21/31
	5.9	Acceleration time, with/without load	s	6.0/5.0
	5.10	Service brake		Hydrostatic
Drive	7.1	Manufacture of engine/type		Deutz D2011L04
	7.2	Engine performance according to ISO 1585	kW	36.9
	7.3	Rated speed	rpm	2100
	7.4	Number of cylinders/displacement	cm ³	4/3108
	7.5	Fuel consumption to VDI	l/h, kg/h	2.5l/h
Others	8.1	Type of drive control		hydrostatic infinitely variable
	8.2	Working pressure for attachments	bar	170(185) ¹¹⁾
	8.4	Noise level	dB(A)	76
	1) Optional: Pneumatic Tyre 27x10-12/14PR, 7.00-12/16PR twin tyre 2) Optional: SE Tyre 6.5-10, 23x9-10 3) Figure in brackets refer to twin wheel 4) 27x10-12 tyre, 1053mm; 28x9-15 tyre, 975mm		5) Standard, Duplex, Triplex mast 6) Standard mast with 150mm free lift 7) Figures in brackets refer to Duplex mast/Tripleax mast 8) Figures in brackets refer to Duplex mast/Tripleax mast	
			9) Figure in brackets refer to Duplex mast/Tripleax mast 10) Figure in brackets refer to Duplex mast/Tripleax mast 11) Figure in brackets refer to Duplex mast/Tripleax mast	

Model	Linde		
	H25T-04	H30D-04	H30T-04
	LPG	Diesel	LPG
Seated	Seated		
5	3.0		
10	500		
2.5	517.5		
15	1785		
	4548	4835	4998
	6230/818	7056/779	7011/987
	2213/2335	2301/2534	2271/2727
	P		
16PR ¹⁾	27X10-12/14PR ¹⁾		
10PR ²⁾	23X9-10/14PR ²⁾		
X/2	2(4)X/2		
10 ³⁾⁴⁾ /942	1053(1220) ³⁾⁴⁾ /932		
9, 5/6 ⁵⁾	5/9, 5/9, 5/6 ⁵⁾		
10/2110 ⁶⁾⁷⁾	2405(2110/2110) ⁶⁾⁷⁾		
10	150		
10/4025 ⁸⁾	3050(2750/4025) ⁸⁾		
15/4810 ⁸⁾	3855(3535/4810) ⁸⁾		
or 2550 ⁹⁾	2250(2070 or 2550) ⁹⁾		
or 1435 ⁹⁾	1135(1064 or 1435) ⁹⁾		
50	2731.5		
4 ¹⁰⁾	1300 ¹⁰⁾		
10X1000	45X122X1000		
A	3A		
10 ¹⁰⁾	1300 ¹⁰⁾		
10	140		
10	160		
103	4078		
103	4278		
190	2360		
180	580		
22/23	22/23		
	0.52/0.52	0.52/0.57	
	0.56/0.46	0.52/0.45	0.56/0.46
	16500/12500	18200/16900	18100/14200
	20/31	23/29	22/29
6.0/5.0	6.2/5.2		6.0/5.1
Hydrostatic	Hydrostatic		
	Nissan K25	Deutz D2011L04	Nissan K25
	37.4	36.9	37.4
	2200	2100	2200
	4/2488	4/3108	4/2488
	2.4kg/h	2.62l/h	2.6kg/h
Hydrostatic infinitely variable	hydrostatic infinitely variable		
185 ¹¹⁾	200 (215) ¹¹⁾		
	74	76	74

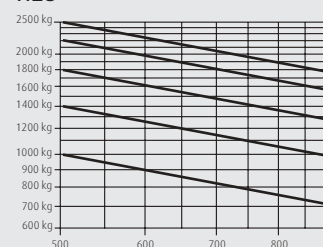
9) Figures in brackets refer to optional equipment

10) Different tyre vs different figures

11) Figure in brackets refer to triplex mast

Lifting Capacity Standard Fork C

H25

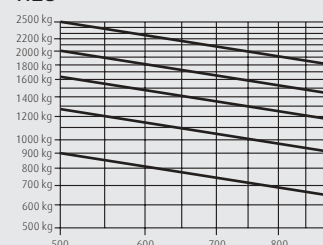


kg

mm

Standard, Duplex mast

H25



kg

mm

Triplex mast

Mast Datasheet

Standard masts (mm)

Lift height

Retracted height

Retracted height with 150mm free lift

Free lift

Height of overall at max. lift

H25: Choose SE tyre if Lift height > 4975

H30: Choose SE tyre if Lift height > 4975

Duplex masts (mm)

Lift height

Retracted height (Height of mast, L)

Free lift

Height overall at max. lift

Triplex masts (mm)

Lift height

Retracted height (Height of mast, L)

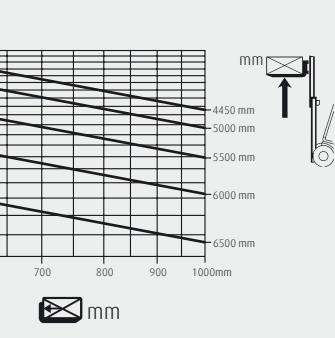
Free lift

Height of mast, extended

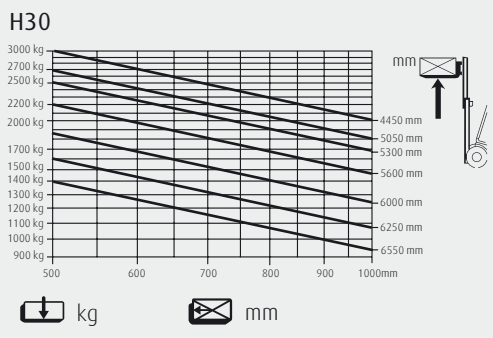
Choose SE tyre if Lift height > 4975

Alternative lift heights and figures

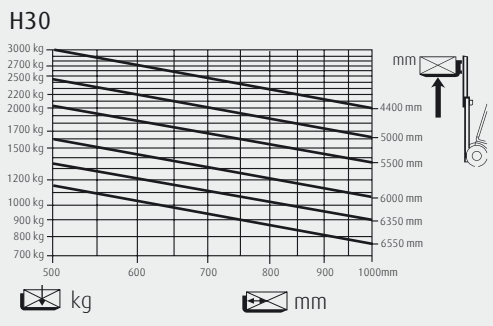
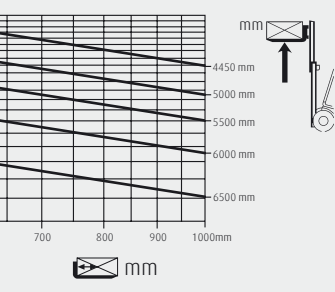
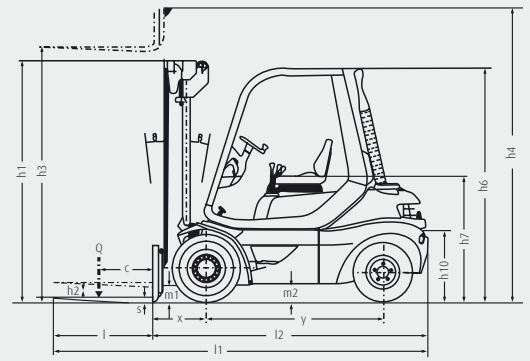
Capacity Diagram for Standard, Duplex Mast and Triplex Mast with Fork Carriage:



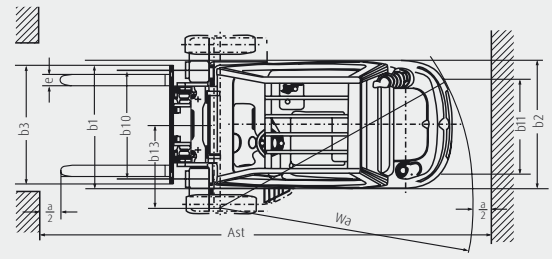
Single mast



Standard mast



Duplex, Triplex mast



safety distance a=200mm

Technical Data Sheet (in: mm)

mm)		h ₃	3050	4050	4650	5150	5550
		h ₁	2360	2860	3160	3410	3610
with 150mm free lift		h _{1#}	2405	2905	3205	3455	3655
at max. lift		h ₂	150	150	150	150	150
		h ₄	3855	4855	5455	5955	6355

Free lift height > 4750mm

Free lift height > 5050mm

mm)		h ₃	2750
(Height of mast, lowered)		h ₁	2110
		h ₂	1475
max. lift		h ₄	3535

mm)		h ₃	4025	5075	6275
(Height of mast, lowered)		h ₁	2110	2460	2860
		h ₂	1475	1825	2225
extended		h ₄	4810	5860	7060

Lift height > 4975mm

Dimensions and figures for triplex masts on request

Features

Original Linde hydrostatic drive

- Responsive, smooth and precise driving
- No clutch, differential or drum brakes; hydrostatic drive assumes function of service brake
- Robust drive system, well proven in severest duty
- Low maintenance costs and long life



Linde twin drive pedals

- Quick change of forward/reverse direction without changing feet on pedals
- Short pedal stroke
- Increased productivity
- Fatigue-free working



High-economy engine technology

- Diesel and LPG engine incorporating most advanced technology
- High torque
- Low fuel consumption
- Low exhaust gas and soot emission levels, fit with EU stage III A standard (Diesel engine)



High-visibility masts

- Clear-view lifting masts in standard, duplex or triplex configuration
- Lift chains carry plastic cams to guide the hydraulic hoses when attachments are fitted

"Subject to modification in the interests of progress, illustration and technical details not binding for actual constructions and may show the optional equipments."

H250/T-H300/T D-02 2007.05 Printed