



Electric Forklift Trucks
Capacity 2500 and 3000 kg
E 25 S, E 25/600 S, E 30 S,
E 30/600 S

SERIES 336-03



Linde Material Handling

Linde

Safety

Model of maneuverability. Due to the patented Linde combi axle these forklifts combine excellent maneuverability and superb stability. Designed with a high level of engineering expertise and constructed from high-quality materials, they take tough working conditions in their stride.

Performance

Advanced powerful AC motor combined with the original Linde Load Control system enable the operator to turn the truck's vast potential into utmost productivity. Comfortable and precise fingertip control of all mast functions.

Comfort

The high level of operator comfort allows a high level of precision and working performance. Ergonomic layout of all controls including the adjustable, suspension-mounted seat and "armrest unit" and Linde twin drive pedals provide the basis for fast, stress-free working.

Reliability

Electric forklifts need reliable electronics. Linde Digital Control provides dependability of a high standard through redundant monitoring systems, complete protection from dust and dirt is gained by a totally enclosed aluminium casing which can be matched to individual requirements.

Productivity

Effective and costefficient at work. Battery change completed in record time thanks to the tiltback cab that opens in one easy motion. Shorter downtime is an added benefit of this convenient access. Time for battery maintenance is reduced to mere minutes.

Technical data

Characteristics	1.1	Manufacturer		LINDE	LINDE
	1.2	Model designation		E 25 S	E25/600 S
	1.3	Power unit: Battery, diesel, gasoline, LP gas, AC		Battery	Battery
	1.4	Operation: Manual, pedestrian, rider stand, rider seat, order picker		Seated	Seated
	1.5	Load capacity	Q (kg)	2500	2500
	1.6	Load center	c (mm)	500	600
	1.8	Load distance	x (mm)	447	447
	1.9	Wheelbase	y (mm)	1670	1670
	Weight	2.1	Service weight	kg	4505
2.2		Axle load with load, front/rear	kg	6175/830	6490/995
2.3		Axle load without load, front/rear	kg	2255/2250	2425/2560
Wheels and tyres	3.1	Tyres (R=Solid rubber, SE=Superelastic, P=Pneumatic, PU=Polyurethane)		SE	SE
	3.2	Tyre size, front		23 x 9-10 ^{1) 3) 4)}	23 x 10-12 ^{1) 3) 4)}
	3.3	Tyre size, rear		200/50-10	200/50-10
	3.5	Wheels, number front/rear (x = driven)		2x/2	2x/2
	3.6	Track width, front	b10 (mm)	960	960
	3.7	Track width, rear	b11 (mm)	895	895
	Dimensions	4.1	Mast/fork carriage tilt, forward/backward	α/β (°)	5/7.5
4.2		Mast height, lowered	h1 (mm)	2229 ⁷⁾	2229 ⁷⁾
4.3		Free lift	h2 (mm)	150	150
4.4		Lift	h3 (mm)	3050	3050
4.5		Mast height, extended	h4 (mm)	3688	3688
4.7		Overhead guard/cab height	h6 (mm)	2070	2227
4.8		Seat height	h7 (mm)	1043	1200
4.12		Tow coupling height	h10 (mm)	650	650
4.19		Overall length	l1 (mm)	3371	3579
4.20		Head length	l2 (mm)	2370	2378
4.21		Overall width	b1/b2 (mm)	1180	1228
4.22		Fork dimensions	s/e/l (mm)	45 x 100 x 1000 ⁸⁾	45 x 100 x 1000 ⁸⁾
4.23		Fork carriage DIN 15 173, Class/Form A, B		2 A	2 A
4.24		Fork carriage width	b3 (mm)	1150	1150
4.31		Ground clearance under mast, with load	m1 (mm)	136	140
4.32		Ground clearance, center of wheelbase	m2 (mm)	117	121
4.33		Aisle width, 1000 x 1200 mm pallet crosswise	Ast (mm)	3721	3691
4.34		Aisle width, 800 x 1000 mm pallet lengthwise	Ast (mm)	3850	3820
4.35		Turning radius	Wa (mm)	1924	1931
4.36		Minimum pivot point distance	b13 (mm)	-	-
Performance	5.1	Travel speed with/without load	km/h	20/20	20/20
	5.2	Lift speed with/without load	m/s	0.44/0.53	0.44/0.53
	5.3	Lower speed with/without load	m/s	0.55/0.55	0.55/0.55
	5.5	Drawbar pull with/without load	N	3984/4371	3984/4371
	5.6	Maximum drawbar pull with/without load	N	13500/13500	13500/13500
	5.7	Gradeability with/without load	%	8/13.8	8/13.8
	5.8	Maximum gradeability with/without load	%	16/26.8	16/26.8
	5.9	Acceleration with/without load	s	4.2/3.9	4.3/4.0
	5.10	Service brake		mech./electr.	mech./electr.
	Drive	6.1	Drive motor (S2 60 minutes rating)	kW	2x8
6.2		Lift motor (S3 15% rating)	kW	17	17
6.3		Battery DIN 43 531 / 35 / 36 A, B, C, no		43 536 A	43 536 A
6.4		Battery voltage / rated capacity (5 h)	V/Ah	80/550	80/700
6.5		Battery weight	kg	1458	1863
6.6		Energy consumption, VDI Cycle	kW/h	5.7/8.4	5.9
Others	8.1	Drive controller		Digital	Digital
	8.2	Working pressure for attachments	bar	175	175
	8.3	Oil flow for attachments	l/min	32	32
	8.4	Noise level at operator's ear	dB(A)	65	65
	8.5	Tow coupling, design/type DIN 15 170		-	-

1) Optionally pneumatic tyres
2) Optionally cushion tyres 22 x 9 x 16 / b10 = 1115 mm
3) Optionally cushion tyres 22 x 9 x 16 / b10 = 1170 mm
4) Optionally cushion tyres 22 x 10 x 16 / b10 = 1305 mm

5) Optionally 23 x 10-12
6) Figures in parentheses for 23 x 10-12 tyres
7) With 150 mm free lift
8) Fork lengths "L" \geq 1400 mm; s x e = 50 x 120 mm

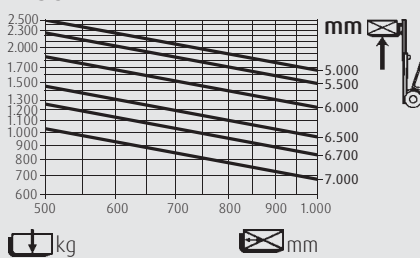
9) Type identification "L" to Draft EC Standard L

LINDE	LINDE
E 30 S	E 30/600 S
Battery	Battery
Seated	Seated
3000	3000
500	600
450	455
1670	1670
4925	5445
7055/870	7445/1000
2350/2575	2550/2895
SE	SE
23 x 9-10 ^{(2) (4) (5)}	23 x 10-12 ⁽⁴⁾
200/50-10	200/50-10
2x/2	2x/2
960 (980) ⁽⁴⁾	960
895	895
5/7.5	5/7.5
2229 ⁽⁷⁾	2229 ⁽⁷⁾
150	150
3050	3050
3841	3841
2070	2227
1043	1200
630	650
3425	3587
2425	2386
1180 (1228) ⁽⁴⁾	1228
45 x 100 x 1000 ⁽⁴⁾	50 x 120 x 1000
3 A	3 A
1150	1150
134	139
115	120
3744	3749
3873	3878
1975	1931
-	-
20/20	20/20
0.42/0.51	0.42/0.51
0.55/0.55	0.55/0.55
3826/4356	3826/4356
13500/13500	13500/13500
7/12.2	7/12.2
14/24	14/24
4.3/4.0	4.3/4.0
mech./electr.	mech./electr.
2x8	2x8
17	17
43 536 A	43 536 A
80/550	80/700
1458	1863
6.4/9.3	6.7/9.7
Digital	Digital
200	200
32	32
65	65
-	-

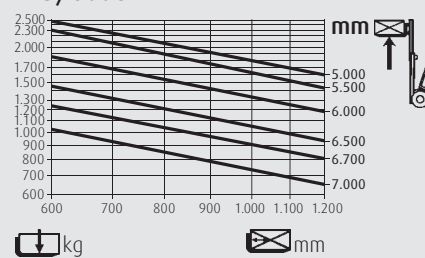


Lifting capacity diagrams

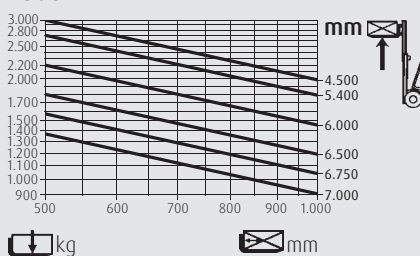
E 25 S



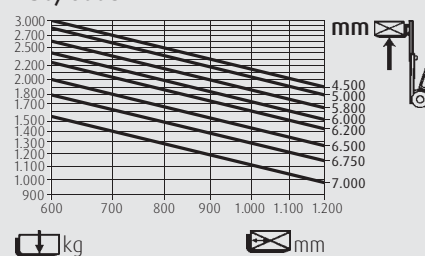
E 25/600 S



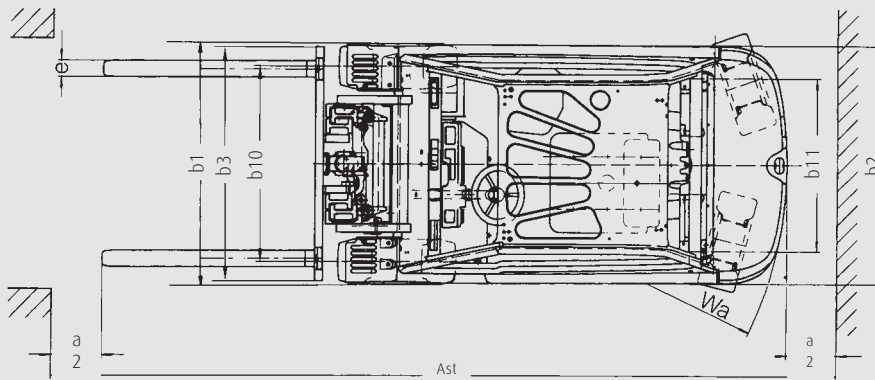
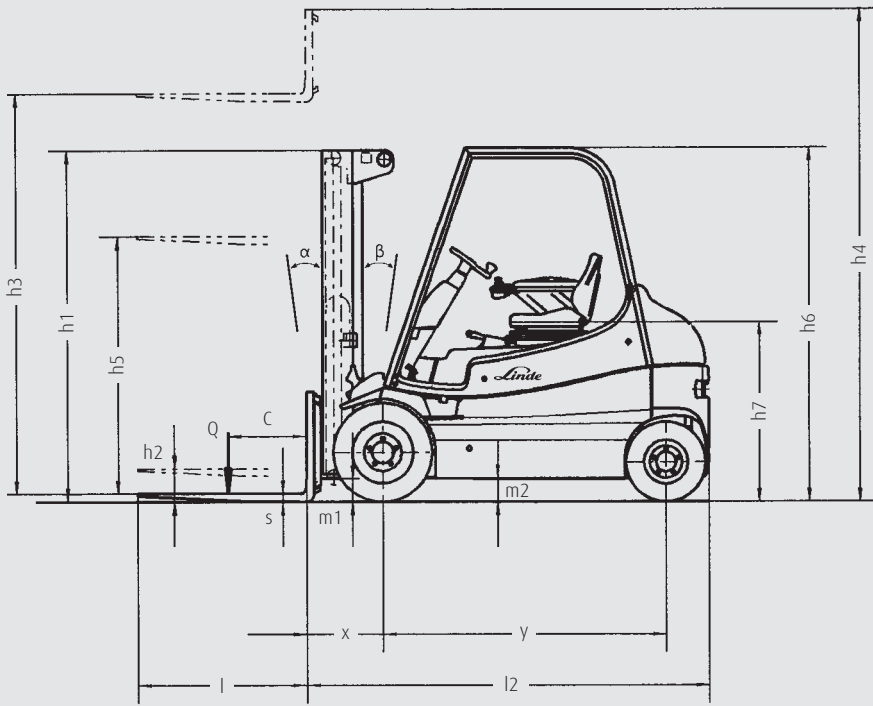
E 30 S



E 30/600 S



Capacity diagrams for trucks with SE tyres and without integral sideshift. Maximum allowable load may be restricted when fitting tyres other than those specified as standard and when using sideshifts or other attachments. Capacity diagrams for triplex masts are available on request.



Safety clearance a = 200 mm

Overall height/lift height (in mm)		Standard mast					Duplex mast			Triplex mast				
E25S Lift	h3	2850	3050	3450	4050	4550	2865	3165	3665	4265	4655	5305	5905	6555
E25/600S mast lowered														
(to 150 mm free lift, Standard only)	h1	2129	2229	2429	2729	2979	2056	2206	2456	2056	2206	2456	2656	2906
Mast extended	h4	3488	3688	4088	4688	5188	3503	3803	4303	4903	5293	5943	6543	7193
Free lift	h2	150	150	150	150	150	1424	1574	1824	1424	1574	1824	2024	2274

Overall height/lift height (in mm)		Standard mast					Duplex mast			Triplex mast				
E30S Lift	h3	2850	3050	3450	4050	4550	2915	3215	3715	4315	4705	5355	5955	6605
E30/600S mast lowered														
(to 150 mm free lift, Standard only)	h1	2129	2229	2429	2729	2979	2081	2231	2481	2056	2206	2456	2656	2906
Mast extended	h4	3641	3841	4241	4841	5341	3706	4006	4506	5106	5496	6146	6746	7396
Free lift	h2	150	150	150	150	150	1274	1424	1674	1274	1424	1674	1874	2124

Standard and optional equipment

Standard equipment

Truck	Higher battery capacity, high version (height h6 = 2,227 mm)
Linde twin drive pedals to control forward/reverse travel and braking	80V/700 Ah – E25/600S
Linde Load Control lever integrated in armrest	80V/700 Ah – E30/600S
Front wheels independently driven by power, maintenance-free AC motors	On-demand hydrostatic steering
Infinitely variable, power-economizing control of travel speed and working hydraulics	Plenty of storage space for writing utensils, beverage cans, etc.
Battery discharge indicator with automatic lift motor slowdown at 80 % discharge	Superelastic tyres
Container entry height standard for E25S to E30S (when fitted with appropriate mast)	
Hydraulically adjustable suspension seat, adapts to operator's body size and weight	
Tiltback cab allowing quick and easy battery change	Mast
Battery capacity, low version (height h6 = 2,070 mm)	Standard mast lift height h3 = 3,050 mm
80V/575 Ah – E25S	Standard, duplex and triplex masts
80V/575 Ah – E30S	Fork length l = 1,000 mm
	Fork carriage width b3 = 1,150 mm

Options

Single drive pedal with direction selector on armrest	Separate tilt and lift control levers
Standard masts, lift height to 5,550 mm	Separate auxiliary hydraulics control levers
Duplex masts (full free lift), lift height to 4,465 mm (E25S, E25/600S), 4,515 mm (E30S, E30/600S)	Sideshift
Triplex masts (full free lift), lift height to 6,555 mm (E25S, E25/600S), 6,605 mm (E30S, E30/600S)	Cab heater
Integral sideshift	Truck lighting, worklamps
Load backrest	Mirrors
One or two auxiliary hydraulic circuits for all mast types	Highway specifications
Alternative fork lengths	Flasher warning lamp
Fork extensions	Audible reversing alarm
Overhead guard can be upgraded to full cabine with roof, front and rear screens and doors (also available with tinted glass)	Truck lighting
Comfort-class seat (fabric cover, breather system, lumbar support)	Worklamps
Super-comfort seat (comfort-class plus seat heater and seat back extension)	Custom paintwork
	Other options available on request

Features

Linde hydrostatic steering

- No kickback and virtually no play
- Ergonomic size of steering wheel
- Combination of dual motor drive and patented Linde combi axle results in supreme maneuverability in tight spaces, enabling truck to turn around on the spot



Linde clear-view mast

- Superb visibility through slim-profile sections of mast
- Full load capacity up to maximum lift height
- Exceptional residual capacity
- High level of safety

Linde twin drive pedals

- Quick change of forward/reverse direction without changing feet on pedals
- Short pedal stroke
- Increased productivity
- Fatigue-free working



Linde Load Control

- Accurate, safe load handling
- Effortless fingertip control of all mast functions
- Hydraulic control levers integrated in armrest



High-economy motor technology

- Two traction motors integrated in front axle
- High torque
- Excellent gradability
- Superb tractive power
- Low noise emissions



Linde operator compartment

- Ergonomic design for efficient, fatigue-free working
- Spacious cab with comfortable footwell and adjustable seat
- Excellent visibility of load and surroundings due to slim-line mast sections

Linde combi axle

- Unites the advantages of both center-pivoted and swing axle
- Small turning radius equivalent to three-wheel truck
- Four-wheeler stability and comfort
- High productivity

Tiltback cab

- Convenient access to battery
- Quick battery change and streamlined servicing
- Safe, rugged chassis enclosed on all sides

